

EDGEWATER

MIAMI CONSTRUCTION NEWS

Miami’s Elysee condo tower goes vertical after massive concrete pour

Crews delivered 5,000 tons of the building material in just 20 hours

By [Jay Kozlarz](#) | Jun 20, 2018, 11:49am EDT

After [breaking ground](#) in December, Miami’s striking Elysee condo tower has begun its 57-story vertical climb along the Bay of Biscayne.

The start of above-ground construction comes after crews completed a nearly twice-around-the-clock, 20-hour concrete pour to create the future skyscraper’s base.

No fewer than 260 truckloads of the heavy gray stuff went into forming the project’s foundation mat—a reinforced slab that ties together nearly 300 underground pilings, some drilled as deep as 150 feet.

Resembling a glassy exclamation point, the Elysee’s three-tiered telescoping design from Architectonica’s Bernardo Fort-Brescia gets wider as it rising.

The tower’s 100 for-sale units are priced from \$1.5 million to upwards of \$10 million and will feature sweeping water views and interiors from Paris-based designer Jean-Louis Deniot.



Image courtesy of Two Roads Development

The Edgewater project at 700 NE 23rd Street comes from Two Roads Development and is on track to open in 2020.



Image courtesy of Two Roads Development

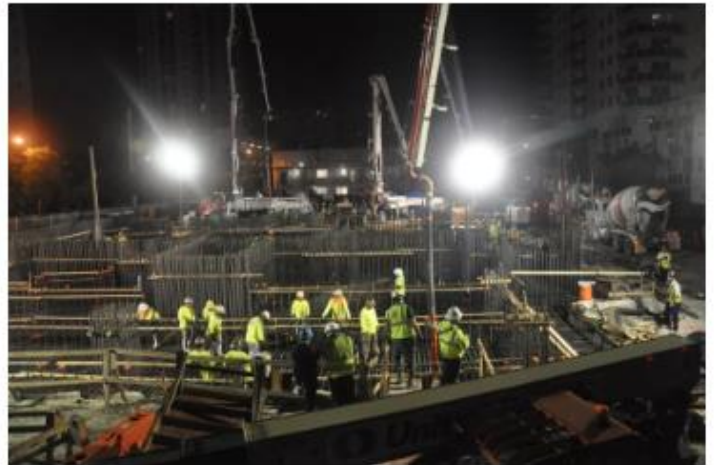


Image courtesy of Two Roads Development

